

## Geological Society Publishing House

Unit 7 Brassmill Enterprise Centre, Brassmill Lane, Bath, Somerset, BA1 3JN, U.K.

Tel: +44 (0)1225 44 50 46 • Fax: +44 (0)1225 44 28 36 • Email: [subs@geolsoc.org.uk](mailto:subs@geolsoc.org.uk)

The Geological Society of London, Registered Charity No. 210161 • VAT number GB 877 0147 09




Image: © Wayne Brittle

|   | <b>Page</b> |
|---|-------------|
| <b>Annual subscriptions</b>                             |             |
| Lyell Collection Complete                               | 2           |
| Journal of the Geological Society                       | 3           |
| Quarterly Journal of Engineering Geology & Hydrogeology | 3           |
| Petroleum Geoscience                                    | 3           |
| Geochemistry: Exploration Environment, Analysis         | 3           |
| Proceedings of the Yorkshire Geological Society         | 4           |
| Scottish Journal of Geology                             | 4           |
| Special Publications                                    | 4           |
| Geoscientist  | 4           |
| <br>  |             |
| Online First / Accepted manuscripts                     | 5           |
| <br>  |             |
| <b>Online Archives</b>                                  |             |
| Special Publications Archives                           | 6           |
| Journal of the Geological Society Archives              | 7           |
| <br>  |             |
| Contact us / Payment, online access and tax information | 8           |
| Book series information                                 | 11          |

# 2020 subscription rates

Subscriptions are available for *one calendar year (1<sup>st</sup> January to 31<sup>st</sup> December 2020)* at the rates listed.

Subscription rates are for single site access and apply to the geographic location of the end user.

| <b>Lyell Collection Complete †</b><br>2020 subscription   |   |   |  |
|---|---|---|--|
| <b>Lyell Collection Complete includes access to:</b>  |   |  |  |
| <b>Journals:</b> <ul style="list-style-type: none"> <li>➤ <i>Journal of the Geological Society</i> (1845-2020)</li> <li>➤ <i>Quarterly Journal of Engineering Geology and Hydrogeology</i> (1967-2020)</li> <li>➤ <i>Geochemistry: Exploration, Environment, Analysis</i> (2001-2020)</li> <li>➤ <i>Petroleum Geoscience</i> (1995-2020)</li> <li>➤ <i>Proceedings of the Yorkshire Geological Society</i> (1839-2020)</li> <li>➤ <i>Scottish Journal of Geology</i> (1965-2020)</li> <li>➤ <i>Journal of Micropalaeontology</i> online only (1982-2017)</li> </ul>       |   |   |  |
| <b>Book series (more information on page 10):</b> <ul style="list-style-type: none"> <li>➤ Geological Society of London <i>Special Publications</i> (480+ volumes)<br/><b>Only available with a Complete subscription:</b></li> <li>➤ Geological Society of London <i>Memoirs</i> (50 volumes)</li> <li>➤ Geological Society of London <i>Engineering Geology Special Publications</i> (26 volumes)</li> <li>➤ <i>Petroleum Geology Conference Proceedings</i> (4<sup>th</sup>, 5<sup>th</sup>, 6<sup>th</sup>, 7<sup>th</sup> and 8<sup>th</sup> conferences)</li> </ul> |   |   |  |
| <b>Historic content - only available with a Complete subscription:</b> <ul style="list-style-type: none"> <li>➤ <i>Transactions of the Geological Society</i> (1811-1845)</li> <li>➤ <i>Transactions of the Edinburgh Geological Society</i> (1868-1963)</li> <li>➤ <i>Transactions of the Geological Society of Glasgow</i> (1860-1963)</li> </ul>   |   |   |  |
|   | <i>Online only</i>  | <i>Online + print copies of<br/>2020 Special Publications</i>                       | <i>Online + all 2020 print<br/>journals / books listed above</i> |
| <b>UK end user</b>  | £5,577 +VAT<br><b>*Saving: £665</b>   | £6,577 +VAT<br><b>*Saving: £398</b>   | £6,971 +VAT<br><b>*Saving: £832</b>                              |
| <b>European Union end user</b>  | £5,924 +VAT<br><b>*Saving: £699</b>   | £6,924 +VAT<br><b>*Saving: £463</b>   | £7,405 +VAT<br><b>*Saving: £872</b>                              |
| <b>VAT rate**</b>   | 20%   | 20%   | 20%  |
| <b>Non-EU Europe or Rest<br/>of World end user</b>  | £5,924 / US\$11,848<br><b>*Saving: £699 / US\$1,395</b>                       | £6,924 / US\$13,848<br><b>*Saving: £463 / US\$923</b>                               | £7,405 / US\$14,810<br><b>*Saving: £872 / US\$1,743</b>          |
| <b>Online access</b>  | <a href="https://www.LyellCollection.org">https://www.LyellCollection.org</a> |   |  |

*\*Saving compared to subscribing to the 7 components of Lyell Collection Complete available as individual subscriptions.*



Subscription rates are for single site access and apply to the geographic location of the end user. Please contact one of the regional agents listed on page 8 if you require a multi-site or global access license.

## Journal of the Geological Society

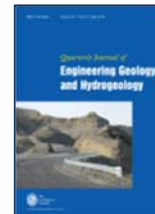
Volume 177, 6 issues



|  | <i>Online only</i>  | <i>Online + print</i> |
|--|---|-----------------------|
| <b>UK end user</b>                             | £1,286 + VAT  | £1,608 + VAT          |
| <b>European Union end user</b>                 | £1,428 + VAT  | £1,785 + VAT          |
| <b>VAT rate**</b>                              | 20%   | 20%                   |
| <b>Non-EU Europe or Rest of World end user</b> | £1,428 / US\$2,856  | £1,785 / US\$3,570    |
| <b>Online access</b>                           | Back to 1845<br><a href="https://jgs.lyellcollection.org/">https://jgs.lyellcollection.org/</a> |                       |
| <b>Schedule</b>                                | January, March, May, July, September, November  |                       |
| Online ISSN: 2041-479X, Print ISSN 0016-7649   |   |                       |

## Quarterly Journal of Engineering Geology and Hydrogeology

Volume 53, 4 issues



|  | <i>Online only</i>  | <i>Online + Print</i> |
|--|---|-----------------------|
| <b>UK end user</b>                             | £596 + VAT  | £746 + VAT            |
| <b>European Union end user</b>                 | £667 + VAT  | £833 + VAT            |
| <b>VAT rate**</b>                              | 20%   | 20%                   |
| <b>Non-EU Europe or Rest of World end user</b> | £667 / US\$1,334  | £833 / US\$1,667      |
| <b>Online access</b>                           | Back to 1967<br><a href="https://qjgeh.lyellcollection.org/">https://qjgeh.lyellcollection.org/</a> |                       |
| <b>Schedule</b>                                | February, May, August, November   |                       |
| Online ISSN: 2041-4803, Print ISSN 1470-9236   |   |                       |

## Geochemistry: Exploration, Environment, Analysis

Volume 20, 4 issues



|  | <i>Online only</i>  | <i>Online + print</i> |
|--|---|-----------------------|
| <b>UK end user</b>                             | £329 + VAT  | £411 + VAT            |
| <b>European Union end user</b>                 | £372 + VAT  | £465 + VAT            |
| <b>VAT rate**</b>                              | 20%   | 20%                   |
| <b>Non-EU Europe or Rest of World end user</b> | £372 / US\$743  | £465 / US\$929        |
| <b>Online access</b>                           | Back to 2001<br><a href="https://geea.lyellcollection.org/">https://geea.lyellcollection.org/</a> |                       |
| <b>Schedule</b>                                | February, May, August, November   |                       |
| Online ISSN: 2041-4943, Print ISSN 1467-7873   |   |                       |

GEEA is co-published by GSL & AAG.

The AAG newsletter *Explore* is not included with a GEEA subscription, email: [explorenewsletter@gmail.com](mailto:explorenewsletter@gmail.com)

## Petroleum Geoscience

The international journal of geoenergy and applied earth science

Volume 26, 4 issues



|  | <i>Online only</i>  | <i>Online + print</i> |
|--|---|-----------------------|
| <b>UK end user</b>                             | £545 + VAT  | £681 + VAT            |
| <b>European Union end user</b>                 | £545 + VAT  | £681 + VAT            |
| <b>VAT rate**</b>                              | 20%   | 20%                   |
| <b>Non-EU Europe or Rest of World end user</b> | £545 / US\$1,090  | £681 / US\$1,362      |
| <b>Online access</b>                           | Back to 1995<br><a href="https://pg.lyellcollection.org/">https://pg.lyellcollection.org/</a> |                       |
| <b>Schedule</b>                                | February, May, August, November   |                       |
| Online ISSN: 2041-496X, Print ISSN 1354-0793   |   |                       |

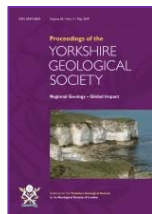
Petroleum Geoscience is co-published by GSL and EAGE.

The 2020 publication schedule is subject to change – e.g. scheduled publication month or some issues may be combined and published as a double issue.

Subscription rates are for single site access and apply to the geographic location of the end user. Please contact one of the regional agents listed on page 8 if you require a multi-site or global access license.

**Proceedings of the Yorkshire Geological Society**

Volume 63, parts 1 & 2 (2020)

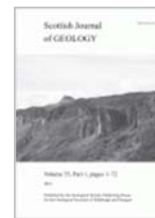


|  | <i>Online only</i>  | <i>Online + print</i> |
|--|---|-----------------------|
| <b>UK end user</b>                             | £248 + VAT  | £310 + VAT            |
| <b>European Union end user</b>                 | £248 + VAT  | £310 + VAT            |
| <b>VAT rate**</b>                              | 20%   | 20%                   |
| <b>Non-EU Europe or Rest of World end user</b> | £248 / US\$496  | £310 / US\$620        |
| <b>Online access</b>                           | Back to 1839<br><a href="https://pygs.lyellcollection.org/">https://pygs.lyellcollection.org/</a> |                       |
| <b>Schedule</b>                                | June & December   |                       |
| Online ISSN: 2041-496X, Print ISSN 1354-0793   |   |                       |

Published on behalf of the Yorkshire Geological Society

**Scottish Journal of Geology**

Volume 56, 2 issues



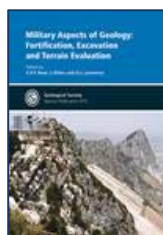
|  | <i>Online only</i>  | <i>Online + print</i> |
|--|---|-----------------------|
| <b>UK end user</b>                             | £306 + VAT  | £382 + VAT            |
| <b>European Union end user</b>                 | £306 + VAT  | £382 + VAT            |
| <b>VAT rate**</b>                              | 20%   | 20%                   |
| <b>Non-EU Europe or Rest of World end user</b> | £306 / US\$611  | £382 / US\$764        |
| <b>Online access</b>                           | Back to 1965<br><a href="https://sjg.lyellcollection.org/">https://sjg.lyellcollection.org/</a> |                       |
| <b>Schedule</b>                                | May & November  |                       |
| Online ISSN: 2041-4951, Print ISSN 0036-9276   |   |                       |

Published on behalf of the Edinburgh and Glasgow Geological Societies

The 2020 publication schedule is subject to change – e.g. scheduled publication month or some issues may be combined and published as a double issue.

**Geological Society of London  
Special Publications ‡**

2020 subscription



|  | <i>Online only</i>   | <i>Online + print</i> |
|--|--|-----------------------|
| <b>UK end user</b>                             | £2,932 + VAT   | £3,665 + VAT          |
| <b>European Union end user</b>                 | £3,057 + VAT   | £3,821 + VAT          |
| <b>VAT rate**</b>                              | 20%  | 20%                   |
| <b>Non-EU Europe or Rest of World end user</b> | £3,057 / US\$6,113   | £3,821 / US\$7,641    |
| <b>Online access</b>                           | Back to 1964 (480+ volumes)<br><a href="https://sp.lyellcollection.org/">https://sp.lyellcollection.org/</a> |                       |
| <b>Quantity per year</b>                       | Varies (13 in 2016; 21 in 2017; 18 in 2018; 14 in 2019)  |                       |
| Online ISSN: 2041-4927, Print ISSN 0305-8719   |  |                       |

**Geoscientist**

Volume 30, 11 parts



|   | <i>Print rate</i>             |
|---|-------------------------------|
| <b>UK delivery address</b>                        | £172                          |
| <b>European or Rest of World delivery address</b> | £197 / US\$395                |
| <b>VAT rate**</b>                                 | 0%                            |
| <b>Publication schedule</b>                       | Monthly, February to December |
| <b>Format</b>                                     | Print                         |
| <b>Print ISSN</b>                                 | 0961-5628                     |

## Online First

*Online First* is a feature offered through the Geological Society's electronic content platform, the Lyell Collection. It enables typeset articles to appear online before the final volume or issue is complete.

This feature is available for all journals on the Lyell Collection site and Geological Society of London *Special Publications*. All *Online First* articles are in their final PDF format apart from final volume pagination, i.e. they have been accepted for publication, copyedited, typeset, proofed and corrected.



<https://blog.geolsoc.org.uk/2018/10/15/2018-earth-science-week-photography-competition-winners-revealed/>

## Accepted Manuscripts

Accepted Manuscripts for Lyell Collection content are posted online within 2 weeks of acceptance to facilitate early access to research and citation for authors and researchers. Digital article identifiers are published for Accepted Manuscripts and registered with CrossRef allowing permanent resolution to the final Version of Record when it is published. This content is labelled "**Accepted Manuscript**"

## Access entitlements for current institutional subscribers #

*Lyell Collection Complete*† subscribers can view the full text of all *Online First* articles and accepted manuscripts in the Lyell Collection.

*Special Publications*‡ subscribers can view the full text of all Special Publication *Online First* articles and accepted manuscripts. <https://sp.lyellcollection.org/online-first>

Subscribers to individual journals can view the full text of *Online First* articles and accepted manuscripts in the relevant journal.

# Perpetual access is only available to *Online First* articles or accepted manuscripts published in a completed volume or issue within the subscribed-to calendar year.

*Online First* articles and accepted manuscripts are also available using pay-per-view. Please see [www.geolsoc.org.uk/ppv](http://www.geolsoc.org.uk/ppv) for details of short-term access options.

## More information

[www.geolsoc.org.uk/OnlineFirst](http://www.geolsoc.org.uk/OnlineFirst)



With the Lyell Collection module on Geofacets, the Geological Society of London and Elsevier team up to deliver cutting-edge science for oil and gas exploration.

More information: [www.geolsoc.org.uk/Geofacets](http://www.geolsoc.org.uk/Geofacets)

---

# Geological Society of London *Special Publications* - Online Archive

Special Publications are renowned for their high quality of science and production. Each volume focuses on a specific theme and represents a balanced, state-of-the-art treatment of the subject matter.

Purchase Special Publication archives of volumes 1 to 450 outright for a one-off fee allowing perpetual access.

Download a list of the Special Publication titles in the various archives from [www.geolsoc.org.uk/lcaccess##SParchive](http://www.geolsoc.org.uk/lcaccess##SParchive)

MARC and KBART records are available from [www.geolsoc.org.uk/MARCrecords](http://www.geolsoc.org.uk/MARCrecords)

All Special Publication volumes are available online on payment of an annual subscription fee (for the Special Publications‡ alone, or as part of Lyell Collection Complete†).

The 450 volumes are available in five separate archives:

|                    | SP Volumes | Number of articles | Number of pages | UK end users | European Union end users | Europe and Rest of World end users |
|--------------------|------------|--------------------|-----------------|--------------|--------------------------|------------------------------------|
| SP Archive 1       | 1 - 100    | 2,500              | 41,000          | £5,856 + VAT | £5,856 + VAT             | £5,856 / US\$11,713                |
| SP Archive 2       | 101 - 200  | 2,000              | 36,000          | £5,856 + VAT | £5,856 + VAT             | £5,856 / US\$11,713                |
| SP Archive 3       | 201 - 300  | 2,000              | 45,000          | £5,856 + VAT | £5,856 + VAT             | £5,856 / US\$11,713                |
| SP Archive 4       | 301 - 400  | 1,750              | 35,000          | £5,856 + VAT | £5,856 + VAT             | £5,856 / US\$11,713                |
| SP Archive 401-450 | 401 - 450  | 836                | 17,230          | £2,928 + VAT | £2,928 + VAT             | £2,928 / US\$5,856                 |

Volumes 1 to 400 are available as 300 or 400 volume sets:

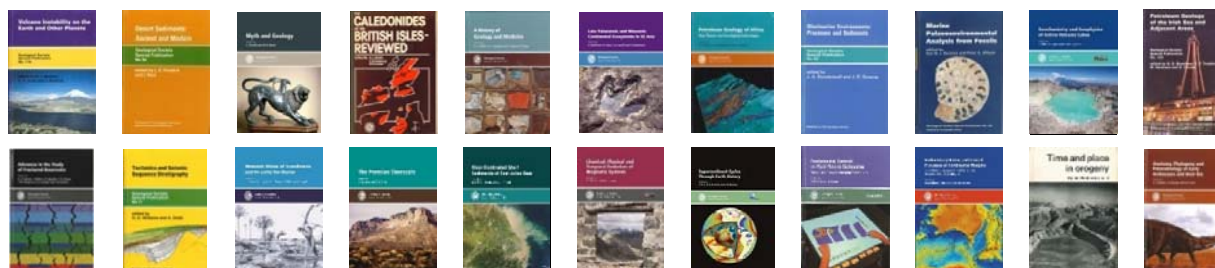
|                | SP Volumes | Number of articles | Number of pages | UK end users  | European Union end users | Europe and Rest of World end users |
|----------------|------------|--------------------|-----------------|---------------|--------------------------|------------------------------------|
| SP archive 300 | 1 - 300    | 6,500              | 122,000         | £14,641 + VAT | £14,641 + VAT            | £14,641 / US\$29,282               |
| SP archive 400 | 1 - 400    | 8,250              | 157,000         | £18,302 + VAT | £18,302 + VAT            | £18,302 / US\$36,604               |

The archives are hosted on the Geological Society's Lyell Collection, and there is no annual maintenance charge. Content is preserved in CLOCKSS.

URL: <https://sp.lyellcollection.org/content/by/volume>

These Archive rates are for single site access and apply to the geographic location of the end user.

Please contact one of the regional agents listed on page 8 if you require a multi-site or global access license.



# Journal of the Geological Society - Online Archive

Journal of the Geological Society (JGS) publishes topical, high-quality recent research across the full range of Earth Sciences. Papers are interdisciplinary in nature and emphasize the development of an understanding of fundamental geological processes. The journal includes broad interest articles that refer to regional studies, but which extend beyond their geographical context.

The JGS Archive (1845-2007) includes over 17,000 articles and comprises over 150 years of geoscience research, including historically important content from many eminent scientists. Access the very earliest geological research from the greats such as Darwin, Murchison and Buckland to modern cutting edge research from an international field of authors.

The *Quarterly Journal of the Geological Society* (1845 to 1970) was re-named the *Journal of the Geological Society* in 1971.

All JGS volumes are available online on payment of an annual subscription fee (for Journal of the Geological Society alone, or as part of Lyell Collection Complete).



**JGS 1845 to 2007 content is available as one archive purchase or in three individual archives:**

|  | Years of content | UK end users  | European Union end users | Europe and Rest of World end users |
|--|------------------|---------------|--------------------------|------------------------------------|
| JGS Archive 1845-2007                    | 1845 - 2007      | £15,950 + VAT | £15,950 + VAT            | £15,950 / US\$31,900               |
| JGS Archive part 1: 100 Years of Geology | 1845 - 1945      | £5,500 + VAT  | £5,500 + VAT             | £5,500 / US\$11,000                |
| JGS Archive part 2                       | 1946 - 1986      | £5,500 + VAT  | £5,500 + VAT             | £5,500 / US\$11,000                |
| JGS Archive part 3                       | 1987 - 2007      | £8,250 + VAT  | £8,250 + VAT             | £8,250 / US\$16,500                |

The JGS archives are hosted on the Geological Society's Lyell Collection, and there is no annual maintenance charge. Content is preserved in CLOCKSS.

URL: <https://jgs.lyellcollection.org/content/by/year>


**These Archive rates are for single site access and apply to the geographic location of the end user. Please contact one of the regional agents listed on page 8 if you require a multi-site or global access license.**

For further Lyell Collection information visit [www.geolsoc.org.uk/lcaccess](http://www.geolsoc.org.uk/lcaccess)  
or [www.geolsoc.org.uk/journals](http://www.geolsoc.org.uk/journals) for individual journal information.


Subscriber help page and Frequently Asked Questions - [www.geolsoc.org.uk/lyellsubsfaqs](http://www.geolsoc.org.uk/lyellsubsfaqs)

To subscribe (to Lyell Collection Complete, individual journals or to the Special Publication Archives) or to request further information, multi-site license prices or a free trial, please contact:

**UK and Scandinavia:** Accucoms. Rob Turner, Tel: +44 (0)203 936 4282. Email: [rob@accucoms.com](mailto:rob@accucoms.com)  
**Rest of Europe:** Accucoms. Tel: +31 88 4100 400. Email: [geologicalsociety@accucoms.com](mailto:geologicalsociety@accucoms.com)  
**USA and Canada:** Geological Society at PCG, Cambridge, MA, USA. Tel: +1 617 395 4028, [geologicalsociety@pcgplus.com](mailto:geologicalsociety@pcgplus.com)  
**South East Asia:** Accucoms. Tammy Chang, Tel: +886 911 778 311, [tammy@accucoms.com](mailto:tammy@accucoms.com) (Malaysia, Singapore, Philippines, Indonesia, Myanmar and Vietnam)  
**India:** Accucoms, New Delhi. Tel: +91 11 45719347. Chandrima Roy, [chandrima@accucoms.com](mailto:chandrima@accucoms.com) and Yogesh Zope, [yogesh@accucoms.com](mailto:yogesh@accucoms.com)  
**Caribbean, Central and South America:** DotLib. Tel: +55 (21) 3431-3430, [info@dotlib.com](mailto:info@dotlib.com)  
**The People's Republic of China:** Charlesworth China. Tel: 010 5869 6201, [info@charlesworth.com.cn](mailto:info@charlesworth.com.cn)  
**All other regions:** Geological Society Publishing House, Bath, UK. Tel: +44 (0)1225 44 50 46, [subs@geolsoc.org.uk](mailto:subs@geolsoc.org.uk)

|   |   |
|---|---|
| <b>Discount</b>                               | No trade discount (0%).   |
| <b>Cancellations</b>                          | Cancellations are not accepted after the subscription payment has been received and processed.  |
| <b>Payment terms</b>                          | <p><b>The prices on this list are for single site access.</b> Please contact the regional agent listed above if you require a multi-site or global access license.</p> <p><b>Payment with order.</b></p> <p>Subscriptions for UK &amp; European Union end users must be paid in GBP.<br/>         By cheque in GBP or US\$ - made payable to Geological Society.<br/>         By Visa, MasterCard or American Express (debited in GBP).<br/>         By Bank Transfer in GBP or US\$. Please see contact us for our bank account details.</p> <p><b>Payments for 2020 subscriptions must be made separately to payments for single issues, back issues, archive orders, book purchases, book proforma and book invoices. Credit notes cannot be used against subscription payments.</b></p> <p>Renewal notices for current subscribers will be issued in August/September 2019. Please email us quoting the renewal number if a modification or a product change is required (e.g. upgrade to Lyell Collection Complete or an amendment from online+print to online only option).</p> <p>Proforma (quotation) for new orders are sent on request.</p> <p><i>Please send orders, payments and remittance advice to:</i><br/>         Geological Society Publishing House<br/>         Unit 7 Brassmill Enterprise Centre<br/>         Brassmill Lane<br/>         Bath, BA1 3JN, UK</p> <p>Email: <a href="mailto:subs@geolsoc.org.uk">subs@geolsoc.org.uk</a><br/>         or <a href="mailto:sales@geolsoc.org.uk">sales@geolsoc.org.uk</a><br/>         Fax: +44 (0)1225 44 28 36</p> |
| <b>Tax charges (VAT, TVA, IVA, BTW, etc.)</b> | <p><b>UK end user subscription payments must include VAT.</b></p> <p><b>European Union (excluding the UK):</b> VAT registered end user institutions and companies are not currently subject to the UK VAT charge when their VAT registration number is included with the order and payment.<br/> <b>Tax rates and details are correct up to 31 December 2020.</b></p> <p><b>India:</b> All local taxes VAT/SERVICE TAX are the responsibility of the recipient of the service and should be paid directly by the recipient to the Indian tax authorities.</p>   |
| <b>License agreement</b>                      | <p>The Geological Society of London does not issue or require the agreement of a formal license for institutional access to Lyell Collection content. The GSL adheres to the SERU guidelines, as published on the NISO SERU website. More information: <a href="http://www.geolsoc.org.uk/SERU">www.geolsoc.org.uk/SERU</a><br/>         Payment of subscription or archive fees (direct or via an agent) implies acceptance of SERU.</p> <p>Multi-site and global licenses may be issued. Text and Data Mining requests to licence should be emailed to <a href="mailto:subs@geolsoc.org.uk">subs@geolsoc.org.uk</a></p>    |



|  |   |
|--|---|
| <ul style="list-style-type: none"> <li>• <b>Online access activation and administration</b></li> <li>• <b>Help pages</b></li> <li>• <b>Usage reports</b></li> <li>• <b>MARC/KBART records</b></li> <li>• <b>Accessibility</b></li> <li>• <b>Supplementary material</b></li> <li>• <b>Discovery services</b></li> <li>• <b>CASA</b></li> <li>• <b>CLOCKSS</b></li> <li>• <b>HighWire Administrator Toolbox</b></li> </ul> | <p><b>Please provide the full address and contact email of the end user so a unique subscriber id can be issued.</b></p> <p><b>Activation:</b> please follow the instructions provided here: <a href="http://www.geolsoc.org.uk/lyellsubsfaqs#activate">www.geolsoc.org.uk/lyellsubsfaqs#activate</a><br/>Access does not have to be re-activated for each subscription year. The information provided during access activation will be used by us to provide you with updates during your subscription.</p> <p><b>Help pages:</b> <a href="http://www.lyellcollection.org/content/help">www.lyellcollection.org/content/help</a><br/><a href="http://www.geolsoc.org.uk/lyellsubsfaqs">www.geolsoc.org.uk/lyellsubsfaqs</a></p> <p><b>Contact the site host:</b> <a href="http://www.lyellcollection.org/feedback">www.lyellcollection.org/feedback</a></p> <p><b>Usage reports.</b> Direct links to usage reports are listed on the FAQ page:<br/><a href="http://www.geolsoc.org.uk/lyellsubsfaqs#UsageReports">www.geolsoc.org.uk/lyellsubsfaqs#UsageReports</a></p> <p><b>MARC record</b> metadata for all book content on the Lyell Collection is provided to WorldShare Collection Manager at OCLC. An excel file listing all the current book titles in the Lyell Collection, plus MARC and KBART records, can be downloaded from <a href="http://www.geolsoc.org.uk/lcaccess">www.geolsoc.org.uk/lcaccess</a></p> <p><b>Accessibility:</b> We aim to make our online journal and book content accessible to all our visitors and improvements to the site are made on an ongoing basis. Our commitment to this endeavour reflects the growing customer need for accessibility to our content in order to best support the science and communities we serve. <a href="http://www.lyellcollection.org/content/accessibility">www.lyellcollection.org/content/accessibility</a></p> <p><b>Supplementary material</b> can be found within the GSL figshare portal at <a href="http://geolsoc.figshare.com">http://geolsoc.figshare.com</a></p> <p><b>Discovery services:</b> Content is indexed in EBSCO Discovery, Primo and Summon.</p> <p><b>Campus Activated subscriber Access (CASA):</b> All content published through HighWire's Intelligent Publishing Platform is compatible with Universal CASA - meaning researchers can access the content at anytime, anywhere, from any device and any source.</p> <p>We have partnered with <b>CLOCKSS</b> (Controlled Lots of Copies Keep Stuff Safe) to ensure that all the articles available on the Lyell Collection are stored safely and securely online. <a href="http://www.clockss.org">www.clockss.org</a></p> <p>The <b>HighWire Administrator Toolbox</b> can assist subscribers to manage their subscriptions. Please note: we cannot access toolbox login details – please contact HighWire direct. This includes: links to usage reports, IP updates, Shibboleth profiles and configuration for OpenURL.<br/><a href="http://highwire.org/librarians/">http://highwire.org/librarians/</a></p>  |
| <p><b>Perpetual access for online subscriptions</b></p>  | <p><b>When a subscription lapses the online access is graced for 90 days and then cancelled. Perpetual access is available on request by contacting <a href="mailto:subs@geolsoc.org.uk">subs@geolsoc.org.uk</a>.</b> A subscriber for 2016 to 2019 who does not renew for 2020 can receive perpetual access to the relevant content published in final volume form during 2016 to 2019. Please note that “<i>Online First</i>” articles and Accepted Manuscripts are not included in this right to perpetual access.</p> <p>A pre-2008 subscription does not entitle a user to access Lyell hosted past content. For subscriptions up to and including 2007 the print copy was the copy of record and electronic access was a free add-on. Once a subscription lapsed, electronic access was switched off.</p>   |
| <p><b>Subscriptions with a print component</b></p>   | <p>Postage is included in price for print subscriptions. <i>Airmail delivery is not available.</i></p> <p>If the subscription payment is processed after printed issues have already been mailed then the back issue(s) will be sent by surface mail (please allow up to 3 months for overseas delivery). Please note that when subscription payments are received and processed after March 2020 the availability of back issues is not guaranteed.</p> <p><b>Missing print issues must be claimed within 3 months of the end of the subscription year (by 31<sup>st</sup> March 2020 for 2019 issues).</b> Claimed issues are sent by surface mail.</p> <p>For book volumes please check the Society bookshop for availability before making a claim:<br/><a href="http://www.geolsoc.org.uk/New-publications">www.geolsoc.org.uk/New-publications</a></p> <p>Please quote the publisher reference or the subscriber id (listed on subscription receipts and renewals) in all correspondence.</p> <p>Please email <a href="mailto:subs@geolsoc.org.uk">subs@geolsoc.org.uk</a> for price and availability of print issues published in 2019 and earlier.</p>  |
| <p><b>GeoScienceWorld</b></p>  | <p>There is some overlap between the journal content on Lyell Collection and GeoScienceWorld (GSW). However, no book content is available on GeoScienceWorld by subscription.</p> <p>Content only available via the Lyell Collection:</p> <ul style="list-style-type: none"> <li>• The deep Journal of the Geological Society archival material (<i>QJGS</i>, 1845 to 1970),</li> <li>• volumes prior to 2000 for Proceedings of the Yorkshire Geological Society and Scottish Journal of Geology</li> <li>• The historic transactions: Transactions of the Geological Society of London, Transactions of the Edinburgh Geological Society, Transactions of the Geological Society of Glasgow</li> </ul> <p>Subscriber ids for Lyell Collection subscriptions (and IPs registered for Lyell Collection access) are not accepted for GeoScienceWorld content.</p>  |

***Journal of  
Micropalaeontology***

The *Journal of Micropalaeontology* is published on behalf of The Micropalaeontological Society by Copernicus Publications. [www.journal-of-micropalaeontology.net](http://www.journal-of-micropalaeontology.net)  
Previously published on their behalf by the Geological Society from 1994 to 2017. Content published from 1982 to 2017 (volumes 1 to 36) is available at <http://jm.lyellcollection.org> to current Lyell Collection Complete subscribers.

## Book series information



Cover image from SP450

### Special Publications

Special Publications are renowned for their high quality of science and production. Each volume focuses on a specific theme and represents a balanced, state-of-the-art treatment of the subject matter. Articles from each volume are available *Online First* months before the hardcopy appears in print. The Society publishes 12 - 20 volumes each year.

<https://sp.lyellcollection.org/>



### Engineering Geology Special Publications

This successful series is devoted to the wide range of engineering geology and geotechnical topics: each volume provides balanced coverage of its subject.

Volume 29 is scheduled for publication in 2020.

<https://egsp.lyellcollection.org/>



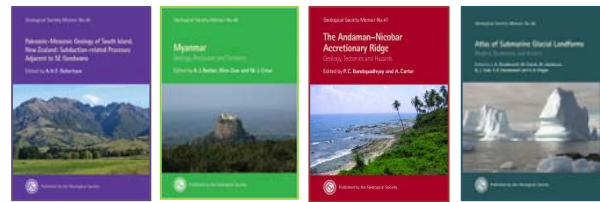
Online access only available with a Lyell Collection Complete subscription

### Memoirs

Memoirs are definitive treatments of their subjects by acknowledged experts. They may be edited collections of papers, or can be written by a single group of authors.

Volume 50 is scheduled for publication in 2020.

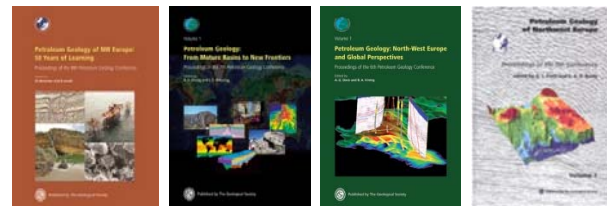
<https://mem.lyellcollection.org/>



### Petroleum Geology Conference Series

The fully edited and peer-reviewed Proceedings of the 4<sup>th</sup>, 5<sup>th</sup>, 6<sup>th</sup>, 7<sup>th</sup> and 8<sup>th</sup> conferences in this prestigious series are hosted on the Lyell Collection.

<https://pgc.lyellcollection.org/>



## Special Publications Archives

This extensive 450 volume archive is hosted on the Geological Society's Lyell Collection by HighWire, and can be purchased outright for a one-off fee allowing perpetual access with no annual maintenance charge.

450 volumes are available in five separate archives:

- Volumes 1 to 100
- Volumes 101 to 200
- Volumes 201 to 300
- Volumes 301 to 400
- Volumes 401 to 450 \*New archive from 2020\*

300 or 400 volumes are available in two sets:

- A 300 volume set, volumes 1-300
- A 400 volume set, Volumes 1-400

Please see page 6 for current rates.



### Special Publication Annual Subscription

All Special Publication volumes are available online on payment of an annual subscription fee (for the Special Publications alone, or as part of Lyell Collection Complete). See page 2 and page 4 for rates and options.