

Corporate
Supporters:



Convenors:

Ben Kilhams
Shell Netherlands and
Petroleum Group

Peter Kukla
RWTH Aachen University

Stanislaw Mazur
Getech UK

Tom McKie
Shell UK

Harmen Mijnlief
TNO

Kees v. Ojik
NAM/Argo Geological
Consultants

Robert Schöner
LBEG

Event Sponsors:

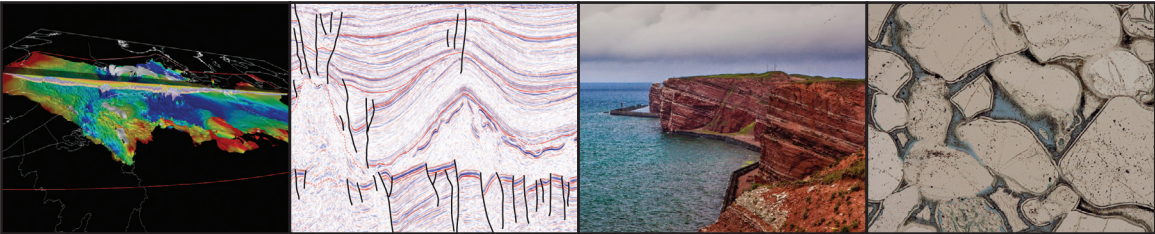


Registration Now Open

Mesozoic Resource Potential in the Southern Permian Basin

7-9 September 2016

Burlington House, Piccadilly, London



The Southern Permian Basin covers a large geographic area of northern Europe including the UK, Netherlands, Germany, Poland, Denmark and Sweden. For many operators it has, and continues to be, a heartland for hydrocarbon production from Permian reservoirs. However, in this mature basin many opportunities remain within the overburden and particularly within the Mesozoic succession associated with heterolithic source rock, reservoir and seal facies and complex tectonics. Interest in this interval has also increased due to its geothermal energy and unconventional hydrocarbon potential. In this conference, we aim to bring together academics and industry workers from across the region to share ideas on the following themes:

- Regional cross-border stratigraphic correlation.
- Sedimentology including reservoir/seal extent, facies and diagenesis.
- Structural evolution and styles.
- Regional and local-scale hydrocarbon generation and charge.
- Examples of geothermal developments in the basin.
- Hydrocarbon field-scale observations (including geophysical, petrophysical and production data) and their application to further exploration, hydrocarbon/geothermal development within the Mesozoic.

There will be two days of oral and poster contributions from the 8th to 9th of September 2016 including sessions on regional overview/tectonics, the Triassic, Jurassic and Cretaceous.

Pre-Conference Activities (optional):

7th September 2016: Field excursion to the Lower Cretaceous of Surrey and Sussex led by Dr. Martin Wells, BP. Details to follow, should you wish to receive updates please register your interest with Laura Griffiths (laura.griffiths@geolsoc.org.uk) and Ben Kilhams (b.kilhams@shell.com).

Evening of the 7th September 2016: Evening Icebreaker Wine Reception at Burlington House.

Confirmed Keynotes:

Prof. Ralf Littke (RWTH Aachen University)
Dr. Mark Geluk (Shell)
Prof. Grzegorz Pienkowski / Prof. Piotr Krzywiec (Polish Geological Institute/Polish Academy of Sciences)
Prof. Jonas Kley (Georg-August-Universität Göttingen)

: cf'z fA Yf'jbzfa Ujcb''UbX'fY[]gIfUjcb'd'YUgY'VebHWH'

Šæ!æÖ!æ@Ö@Ö[[* ææU[&æc ÖÖ'!jæ * d } Å[* ^æUææjæ' ES[} æ[} Å FRæÖÖæVæCEÅ! H ÅJII Å
[!jæ ææ@æ[} ^!^ } &^j ^æ] æ^j , , geolsoc.org.ukÖÖÖ' ^•[: æÖU^•[*!&ÖU[æ] æÖÖÖÖÖ[* c@!} ÖU^!{ æj Öæj



At the forefront of petroleum geoscience

www.geolsoc.org.uk/petroleum