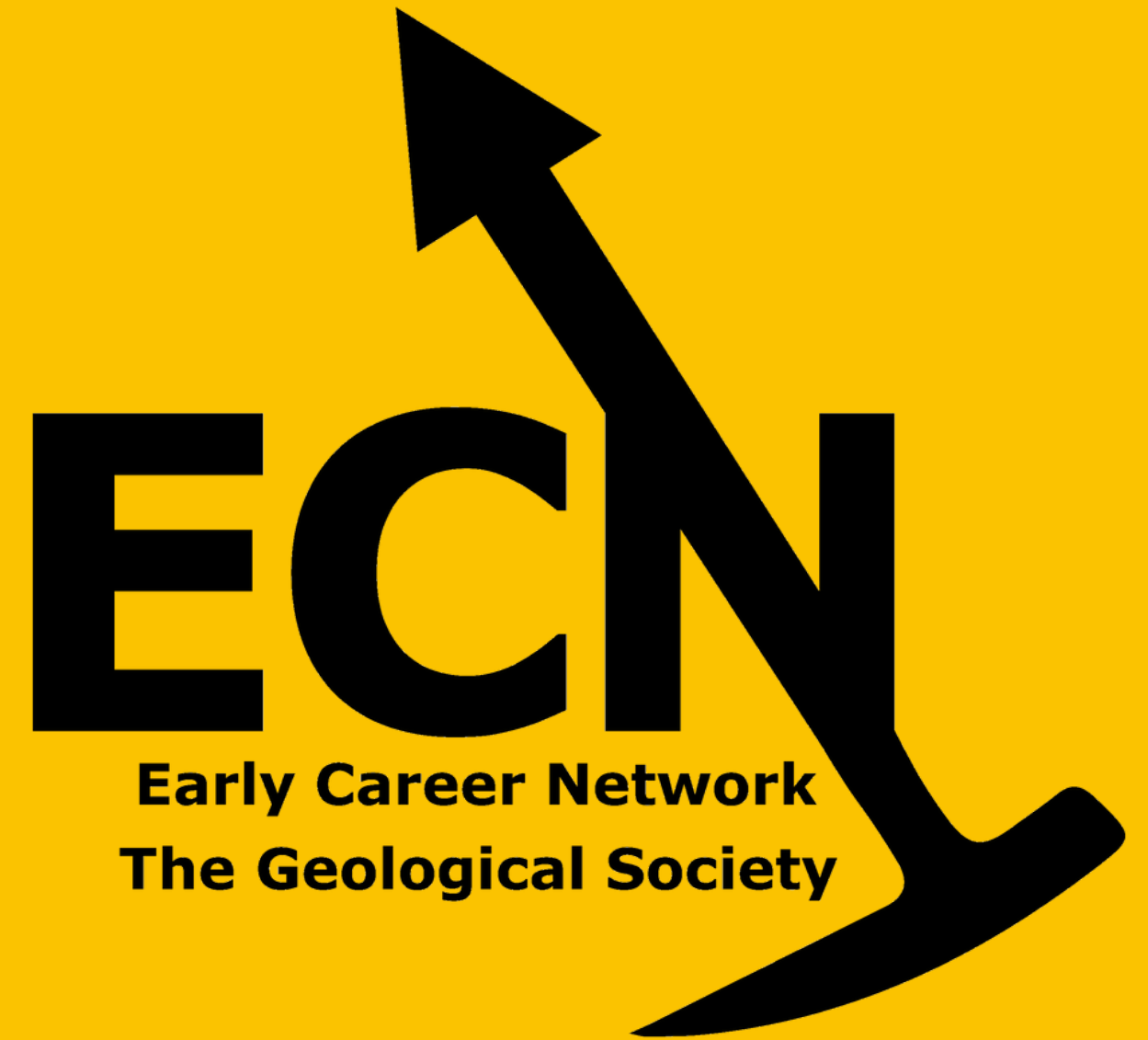


# Sponsorship Information

The Early Career Network (ECN)  
of the Geological Society of London



The  
Geological  
Society

A specialist interest group of the  
Geological Society of London  
(Registered Charity 210161)



The ECN provides **professional support, networking and technical training** for **early career professionals** (ECPs) working in **geoscience** roles, **regardless of industry sector**, which makes the ECN a **unique specialist interest group** in the UK.

The ECN defines ECPs as **individuals working for less than 10 years since gaining their first geoscience qualification.**

The ECN is **non-profit** and all funding and sponsorship is used annually to **provide value to Early Career Professionals** through events, training or subsidised rates.



# Mission Statement

Our volunteer committee is comprised of a unique group of early career geoscience professionals who are well-distributed across key geoscience industry sectors

**Officers**



**Dan Hope** CGeol - Chair  
Engineering Geologist



**Rachael Sims** - Vice Chair  
Geologist - Quarrying



**Ellen Mullarkey** - Secretary  
Hydrogeologist



**Will Downes** - Treasurer  
Risk Analyst



**Jocelyn Barker**  
Sustainability Consultant



**Ellie Smith**  
Engineering Geologist



**Ayesha Landon-Browne**  
PhD Candidate



**River Stewart**  
Undergraduate Student



**Alex Christopher**  
Senior Analyst - Aluminium



**Carlisle Vyphius Jr.**  
Geological Engineer



**Courtney Garbutt**  
Geoenvironmental Engineer



**Lucy Spindler** CGeol  
Geotechnical Engineer



**Jean-Jaques Ferguson**  
Exploration Geologist



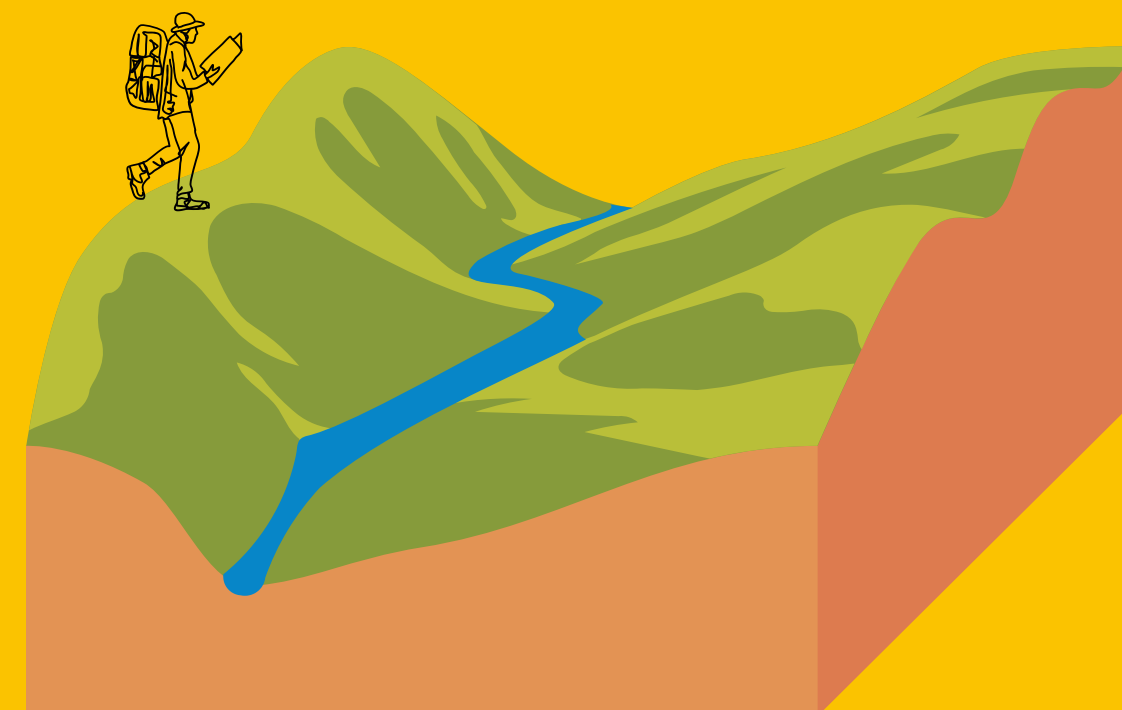
**Dr Awei Mabi** CGeol  
Academic Director

**Meet the  
Committee**

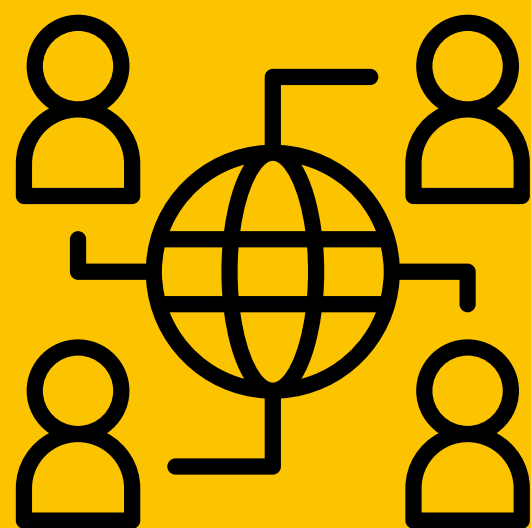




**COLLABORATIVE,  
TECHNICAL  
FIELD TRIPS &  
SKILLS WORKSHOPS**



**PROFESSIONAL ECP  
NETWORKING SESSIONS**

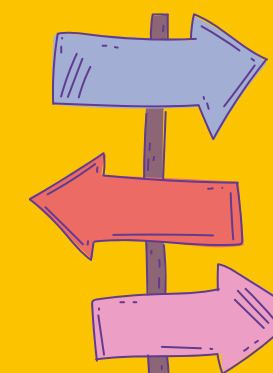


**CONNECT INDUSTRY AND  
SPECIALIST GROUPS TO  
IMPROVE THE ECP EXPERIENCE**

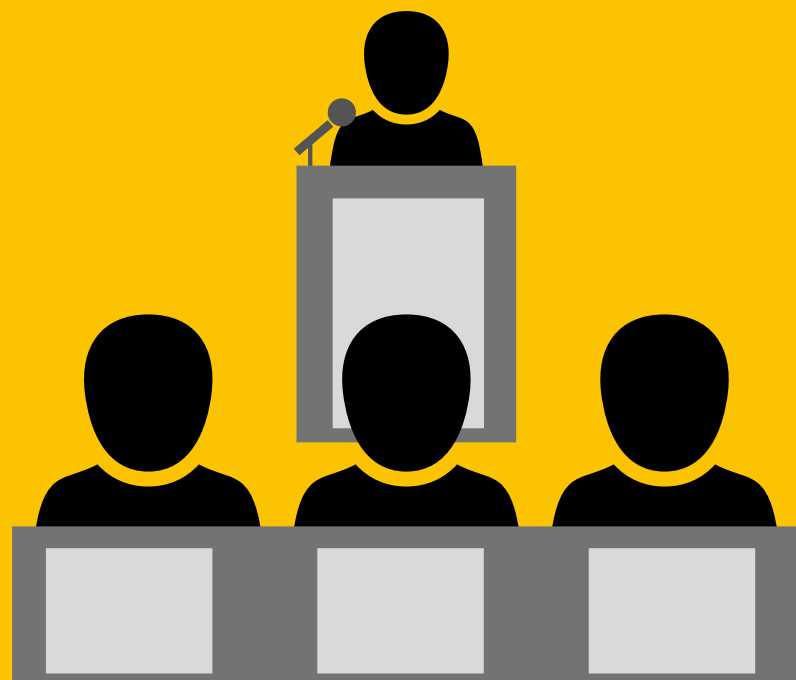
**CONNECT INDUSTRY  
AND GEOSCIENCE  
RECRUITMENT WITH  
ECPs & ENTRY LEVEL  
GEOSCIENTISTS**

**Key Targets**

*There is scope for industry to collaborate with the ECN to organise events. Get in touch if you have an idea which you think may benefit our members.*



# Key Events



## ‘Time Sponsor’

- Industry representatives attending event(s) as keynote speakers, judges and advisors.
- Providing career-specific mentorship/support to followers of the ECN

## ‘Event Sponsor’

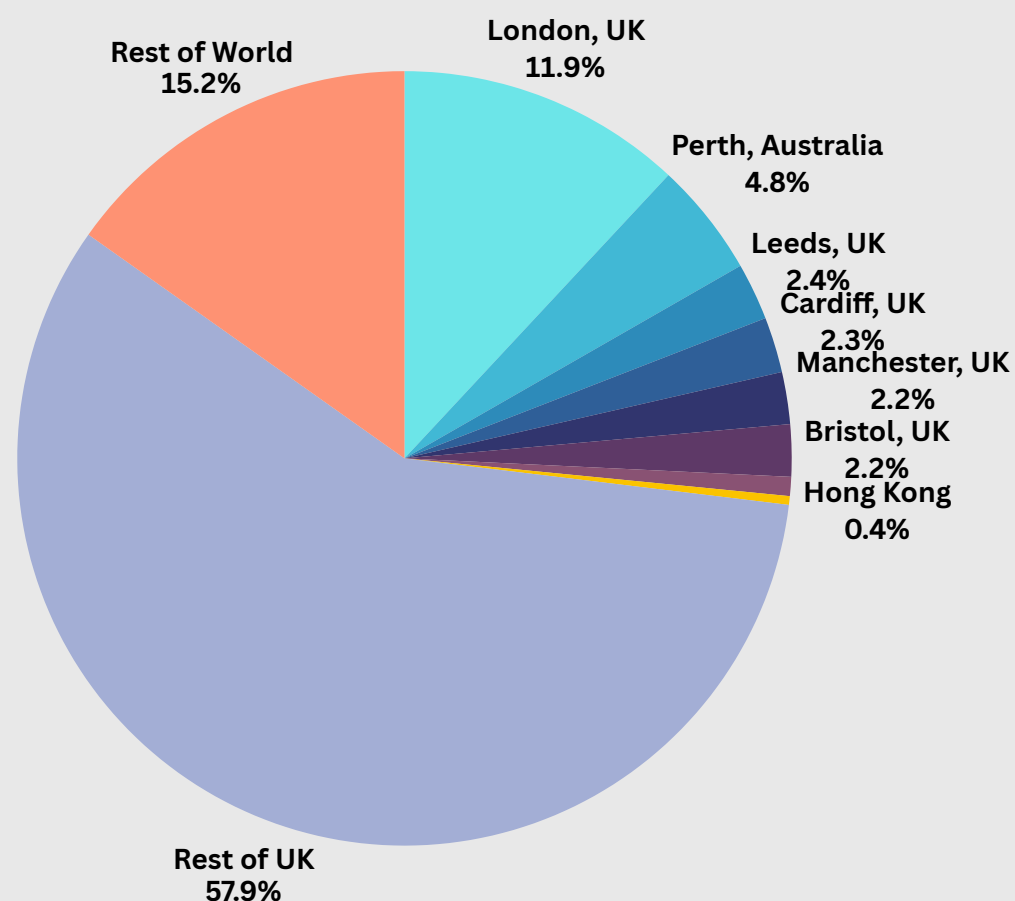
- Monetary sponsorship/donation for a specific ECN-led event  
**£250+VAT recommended per sponsor, per event\***
- **OR** Provision of a venue space with video/audio-recording capability, at no cost to the ECN.
- Includes Company Logo on event presentations and advertisement material via emails, published adverts and social media



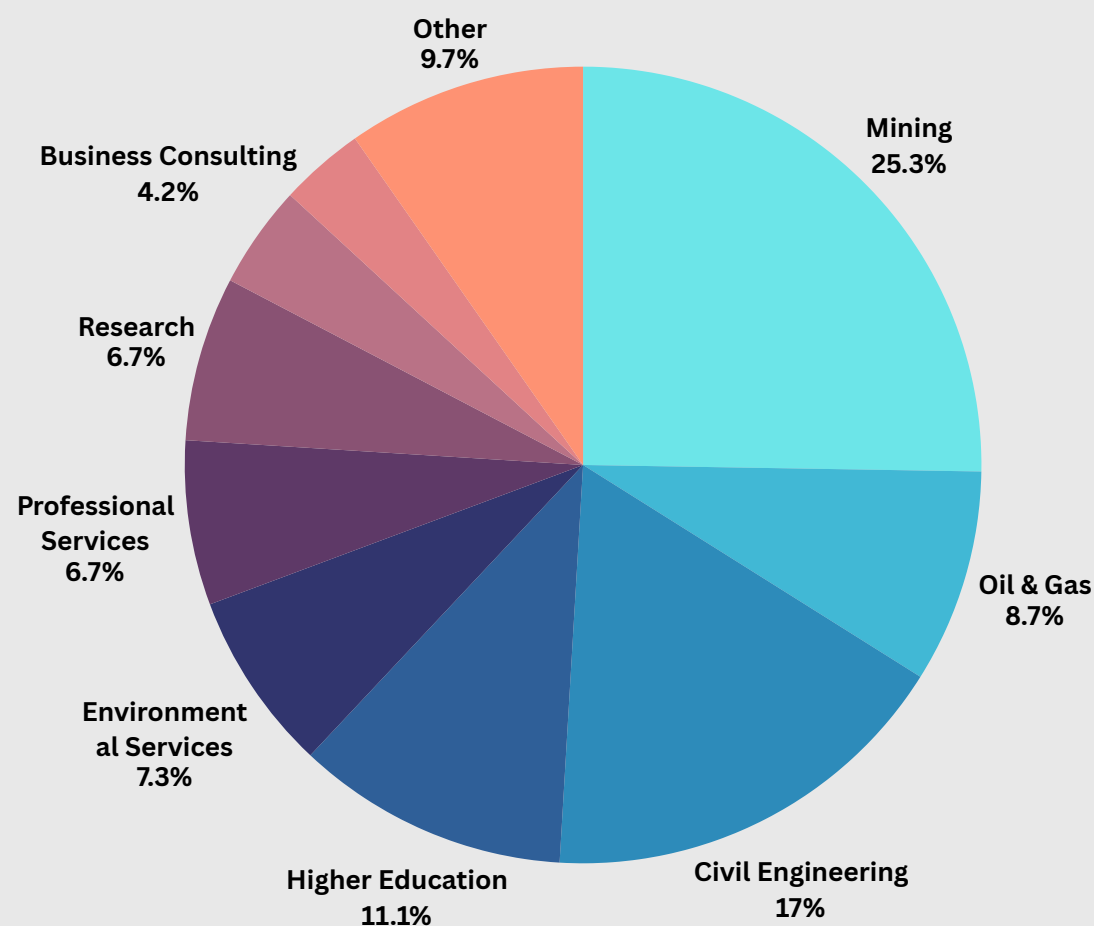
\*Sole-sponsor for the Early Career Geologist Award (May) est. £1250+VAT

# Opportunities

### Follower Location - January 2025



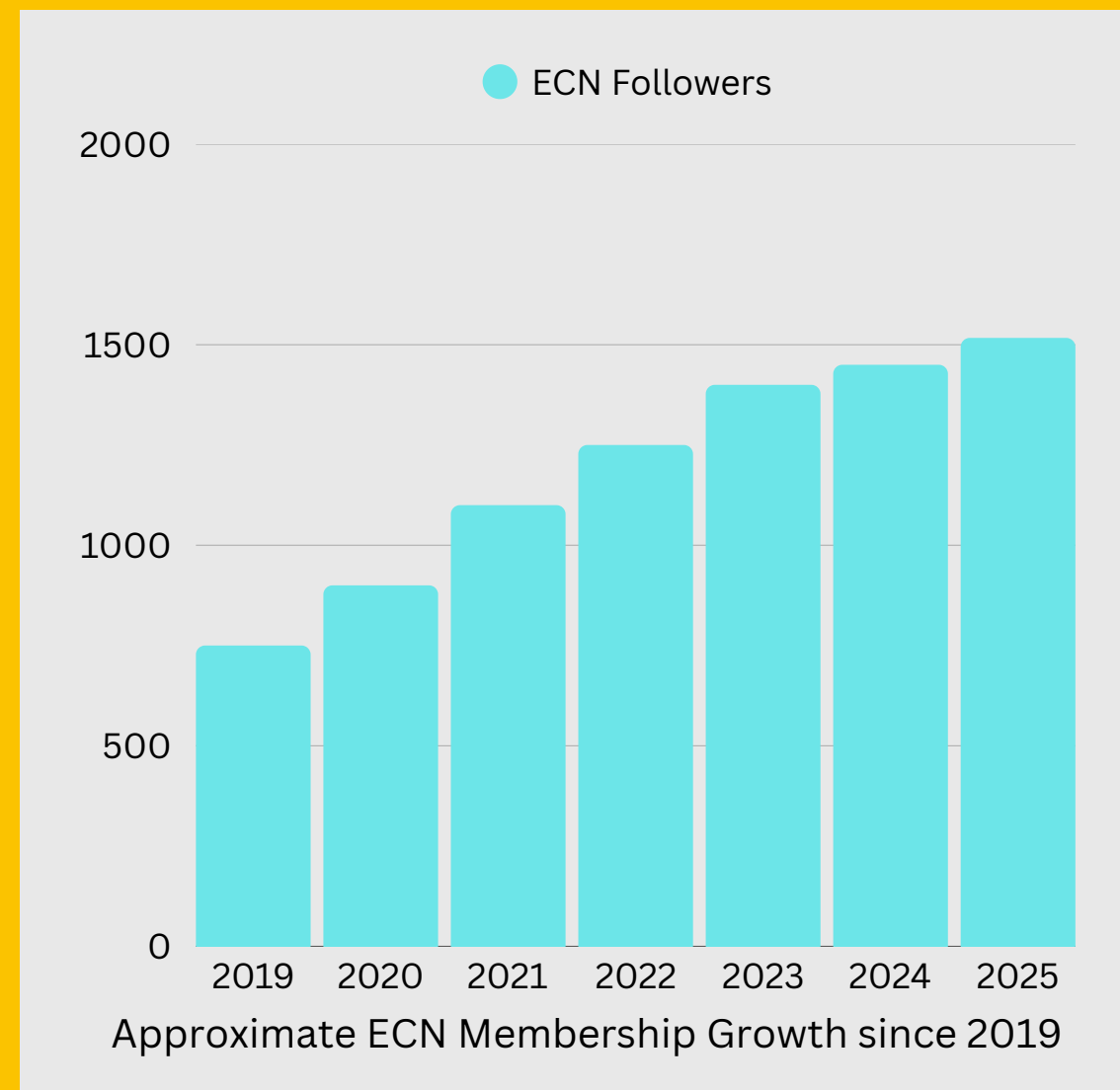
### Follower Industry - January 2025



Statistics based on ECN LinkedIn Analytics, January 2025

## Benefits of sponsoring the Early Career Network include...

- **Visibility** with graduate students looking to start a career in geoscience.
- Your company has **increased exposure** with Early Career Professionals within your own industry, and those in other geoscientists industries who hold transferable skills and are looking to transition.
- Support the **continuous professional development** of ECPs in your own company, whilst offering the same to those **across your industry**.
- Develop a channel of communication with the ECN which can **share job listings**, and support initiatives to **reduce skills gaps** across the geoscience sector.



# Sponsorship Return





The Geological Society



Groups internal to GSL which we actively collaborate with:



Engineering Group –  
Early Career Section



Hydrogeological  
Group



Contaminated Land  
Group



Energy Group



Regional Groups

Groups external to GSL which we collaborate with:



AAPG –  
Europe  
Young  
Professionals



Young Mining  
Professionals London

# Relationship





**e: [geolsocECN@Gmail.com](mailto:geolsocECN@Gmail.com)**

**[Linkedin - ECN](#)**

**[FIND OUT MORE ON OUR WEBSITE](#)**

**Contact Us**