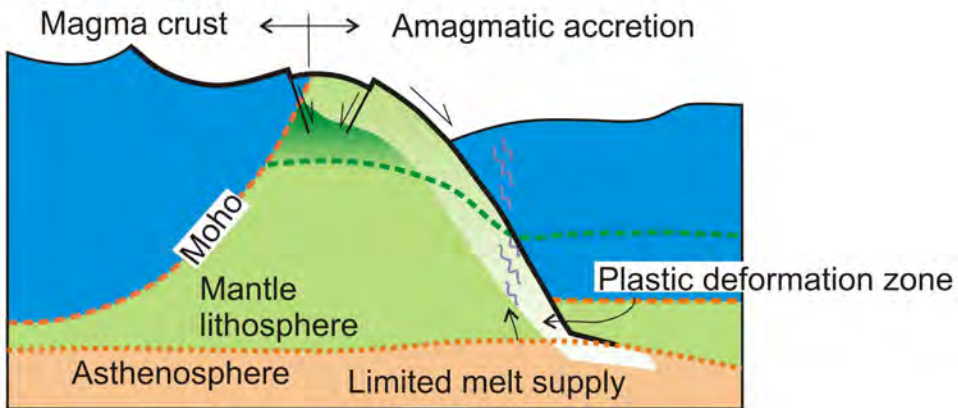
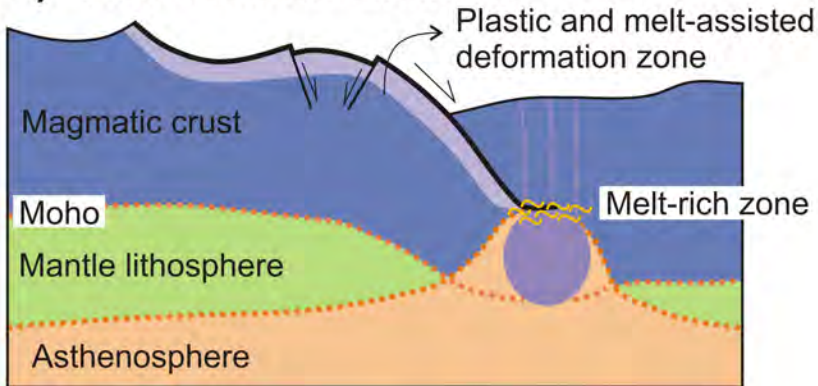
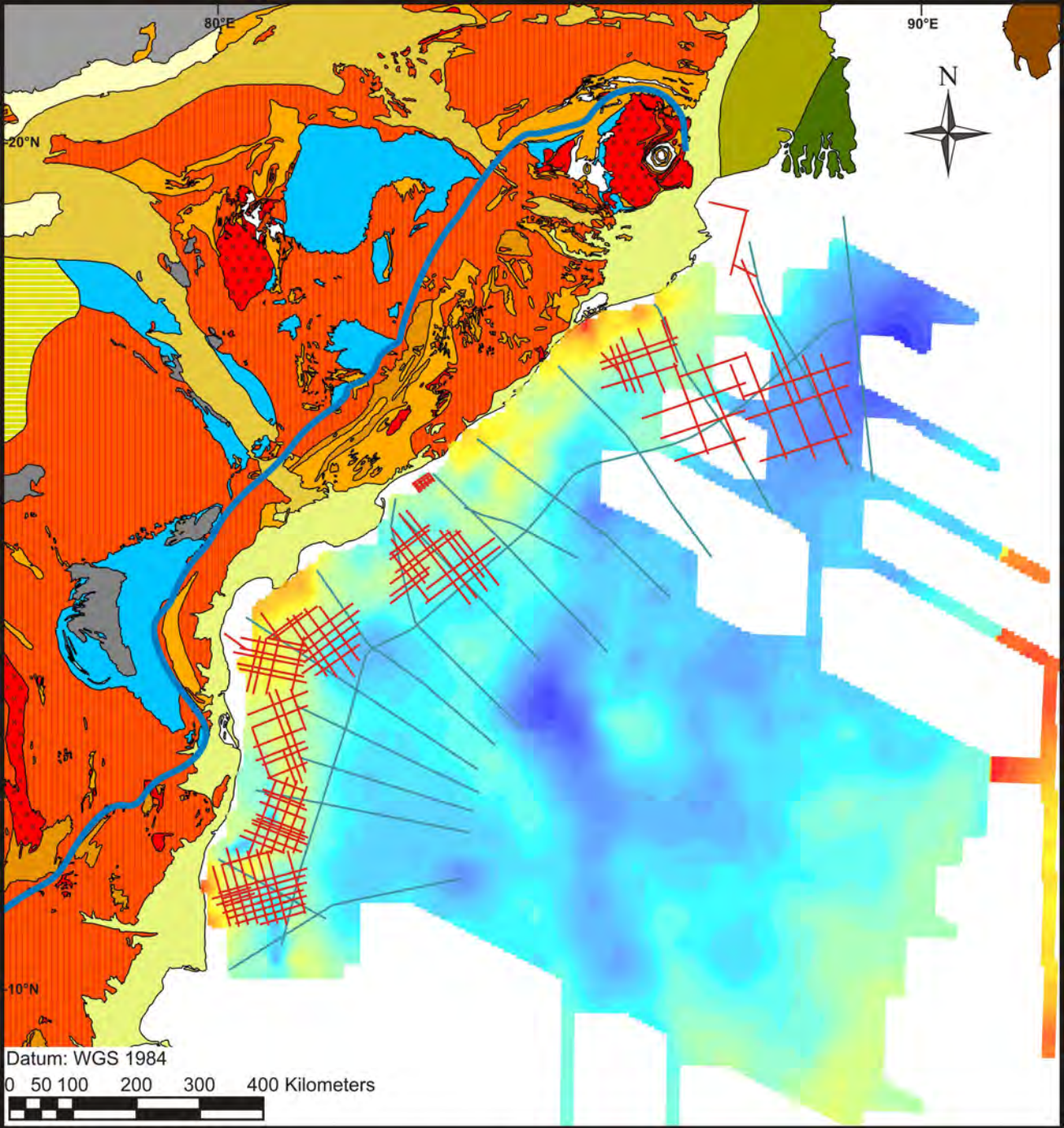


a) Amagmatic extension



b) Melt-assisted extension





Geologic Map Legend

Areas of Archean Folding

- Charnokitic complex, metamorphosed & granitised with high grade granulitic assemblages; syn- or late orogenic
- Undivided
- Granitoids, undivided; syn- or late orogenic
- Archean volcanic rocks
- Basic and ultrabasic intrusions
- Undivided Archean basement including portions granitised and reworked during Archean/Proterozoic folding

Covers of Platforms with Basement of Archean, Proterozoic and Vindhyan (Eocambrian) Folded Zones

- Mesozoic and Cenozoic platform covers folded by the Cenozoic movements on the median masses of the Cenozoic folded belts
- Undivided, including areas with Mesozoic-Cenozoic covers on the marginal parts of the Peninsular platform
- Undisturbed covers with sub-Recent/Recent sediments at the top in faulted/warped basins and sineclises on basements of Archean-Vindhyan folded zones or Mesozoic-Tertiary volcanic rocks
- Undivided Paleozoic-Mesozoic covers of platforms along rifts, narrow elongate sags and sineclises on Arch.-Vindhyan basement
- Regional downwarp (Epi-Vindhyan/Epi-Hercynian) of the ancient platform of pre-Paleozoic folded zones, nature of cover unknown
- Epi-Vindhyan platform with thin unknown covers

Areas of Proterozoic Folding

- Undivided
- Granitoids, undivided (Erinpara granite etc.); syn- or late orogenic
- Basic and ultrabasic intrusions

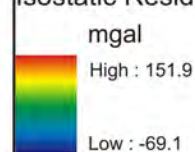
Areas of Vindhyan Folding

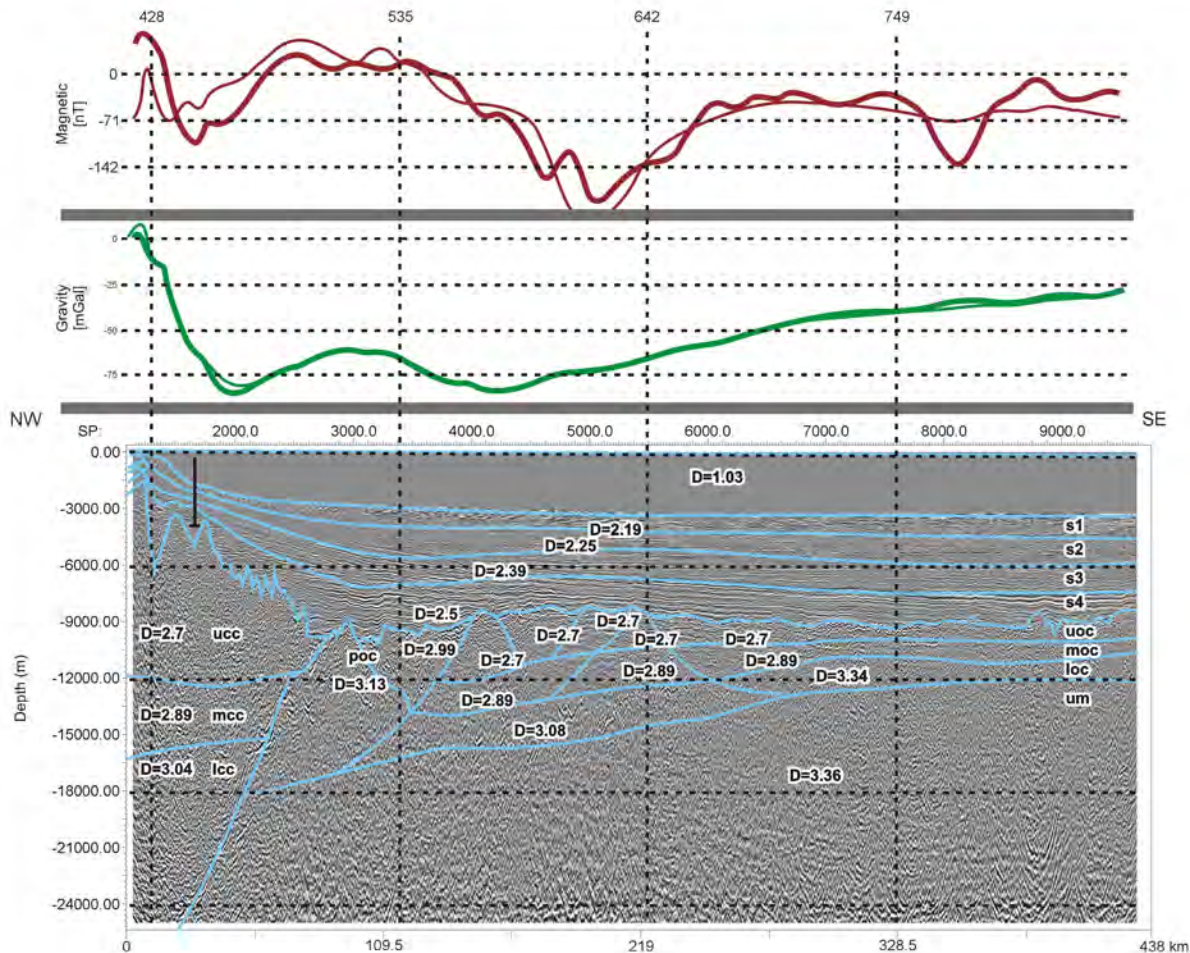
- Eugeosynclinal zones
- Granitoids
- Undivided
- Volcanic rocks (Malani rhyolites)
- Miogeosynclinal zones

Areas of Himalayan-Naga-Lushai (Cenozoic) Folding

- Undivided (Cretaceous - Paleogene) rocks
- Undivided (Triassic - middle Neogene) rocks

Isostatic Residual Anomaly





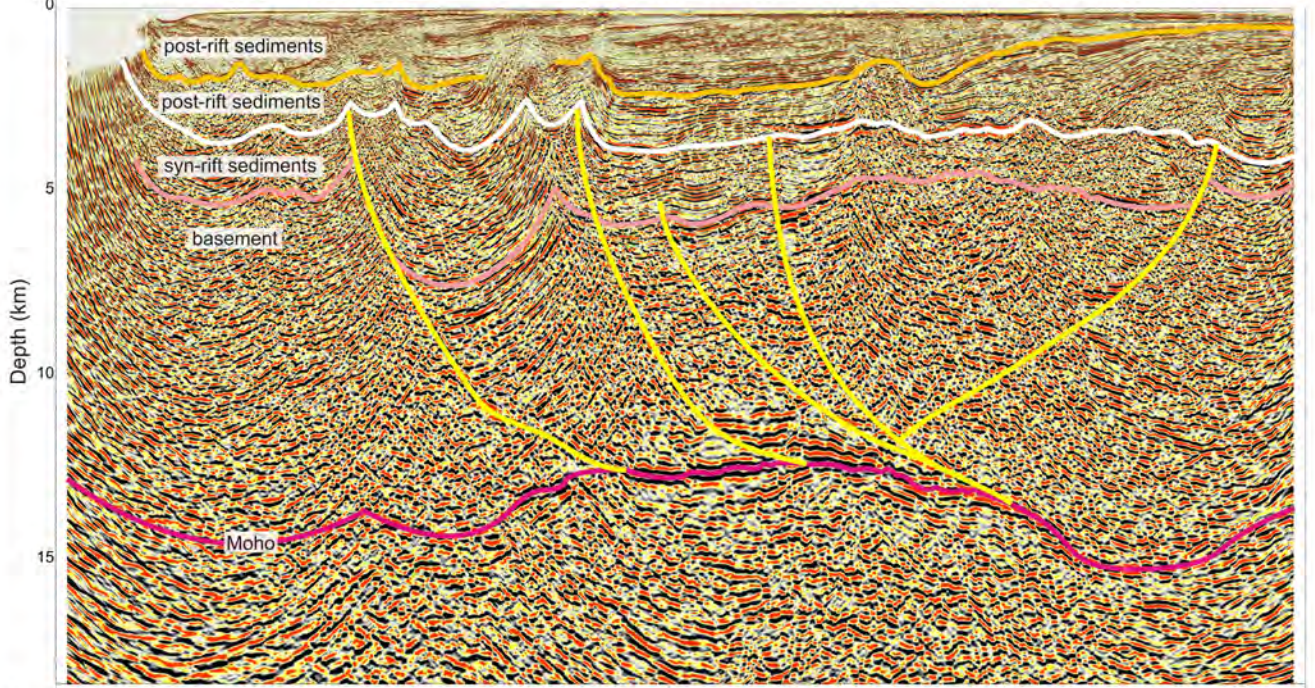
NNW

SSE

SP:

1000.0

2000.0



Depth (km)

km 0

33

66

post-rift sediments

post-rift sediments

syn-rift sediments

basement

Moho

