

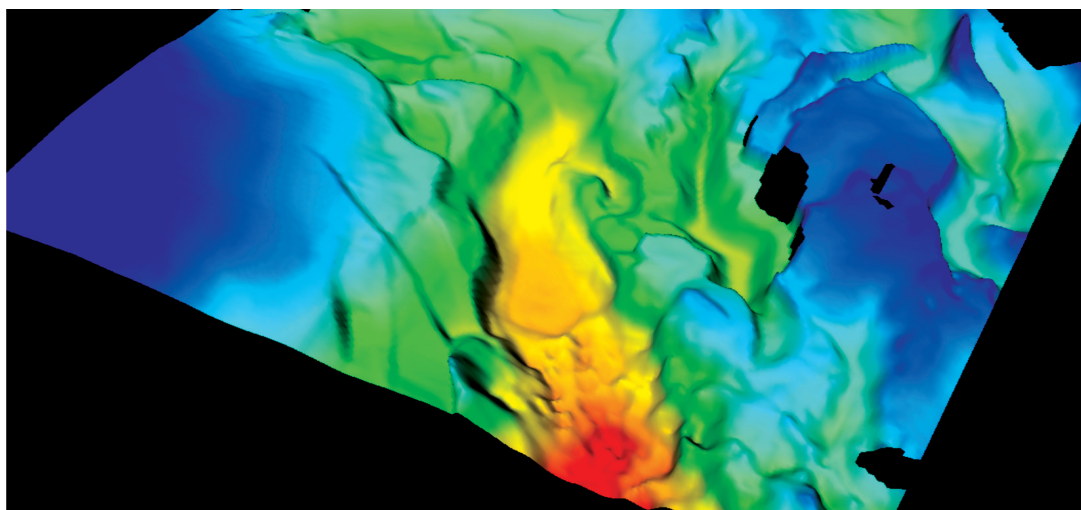


The Geological Society



International Conference: Modelling Sedimentary Basins and their Petroleum Systems 3 - 4 June 2010

The Geological Society, Burlington House, Piccadilly, London



Convenors:

James Iliffe
(BP)

James Maynard
(ExxonMobil)

Nicky White
(Cambridge Univ.)

Pete Burgess
(Shell)

DUE TO THE DISRUPTION TO AIR TRAVEL CAUSED BY THE ICELANDIC VOLCANO THIS CONFERENCE HAS BEEN RESCHEDULED

REGISTRATION NOW OPEN

Advances in modelling of basin formation, fill and fluids.

Themes:

- Basin formation (tectonic and crustal modelling)
- Sediment forward modelling - predicting reservoir, source and seal quality
- Petroleum systems modelling - Predicting hydrocarbon generation, expulsion, migration and timing
- Fluid distribution, pressure, fluid type and biodegradation
- Calibration of models using observed fields and fluid distribution
- Building better integrated models and new technologies

Confirmed Keynote Speakers:

- Prof. Joe Cartwright: Cardiff University
- Dr. Johannes Wendebourg: Shell
- Dr. Nicky White: Cambridge University

To submit an abstract or for further information, please contact:

Steve Whalley, Events Co-ordinator: +44 (0)20 7432 0980

or email: steve.whalley@geolsoc.org.uk



At the forefront of petroleum geoscience

www.geolsoc.org.uk/petroleum